



## February Programme

MEET	Outside the Irish Press Offices, Burgh Quay.
TIME	Sundays, 10.00am.
BRING	Rainwear, flask, sandwiches, torch, reflective armbands and a change of clothes.
WEAR	Hiking boots. <b>RUNNERS NOT ALLOWED.</b>
TRANSPORT	Private bus – Price £5 (unless otherwise stated)
NOTE	The leader has the right to refuse anyone who is not adequately equipped. On the day of the hike, the leader may extend, curtail or alter the route in any way from that described in the programme. <b>The leader sets the pace of the hike and walkers are expected to obey his/her instructions at all times.</b>

### BRING A TORCH AND REFLECTIVE ARM BANDS

<i>Sunday 5th Feb</i>	<b>GLENMALURE TO GLENDALOUGH</b> Route: Glenmalure - Lugduff - Mullacor - Cullentragh - Derrybawn - Glendalough. Leader: Martin Fagan.
<i>Sunday 12th Feb.</i>	<b>HOLLYWOOD GLEN TO KNOCKNABOLEY</b> Route: Hollywood Glen - Church Mtn. - Knocknaboley. Leader: Kevin Parker.
<i>Sunday 19h Feb.</i>	Route: <b>INTRODUCTORY HARD HIKE</b> Kippure - Seefingan - Corrig - Seehan - Stone Cross. Leader: Prionnsias Mac AnBheatha.
<i>Sunday 25thFeb.</i>	<b>TONELAGEE TO THE OASIS</b> Route: Glenmacnass Wataerfall - Tonelagee - Stoney Top Barnacuillan - Mullaclevaun West and East Carrigshouk - The Oasis. Leader: Donal Finn
<i>Sunday 5th March</i>	<b>INTRODUCTORY HARD HIKE</b> Route: Croaghanmoira - Ballincor - Fannierin - Aughavanagh Leader: Frankie Commerford

**NOTE TO LEADERS: THERE IS A FIRST AID KIT ON THE BUS.  
WALKIE TALKIES MUST BE USED ON ALL HIKES  
PLEASE BRING THEM WITH YOU.**

### MOUNTAIN SAFETY NOTE

As hill walking can sometimes be a hazardous activity, it is requested that any walkers on medication or with a medical condition, inform the leader of their condition before the hike.

**MEETING PLACE AT END OF HIKE: THE PALACE BAR, FLEET ST.**

## NIGHT HIKE

- Route:** Ballincedan - Slieve Mann - Lugnaquilla - Camara Hill - Fentons (2am. approx)  
**Date:** Friday night, February 24.  
**Departure:** Custom House at 8.00pm. on Friday and arrive in Ballinlea 10.0pm approx.  
Bus to Ballinabarney Gap where hike begins.  
**Hostel:** Ballinlea Hostel.  
**Cost:** £12 incl. cost of bus and hostel overnight. Booking now open in head office.  
**Return:** Late breakfast and leave at 12 noon. Arrive Dublin 2.00pm. approx. on Saturday  
25th February.  
**Leader:** Dave Rooney. Phone 8344 811 (home after 7.00pm.)

### HILLWALKERS SATURDAY CLUB

This club is for young people aged 13 to 16 years and hikes take place on one Saturday of every month  
Transport is by local bus / DART - depending on the area in Wicklow the hike is being organised in

#### SATURDAY HIKE FOR FEBRUARY

- DATE:** Saturday 12th February 1995  
**MEET:** Irish Press Office, Burgh Quay.  
**TIME:** 08.45 - Arrive back in Dublin at 18.00 approx.  
**HIKE ROUTE:** Circuit of Glencullen  
**LEADER:** Colm McMahon

**WEAR:** *HIKING BOOTS AND A TRACK SUIT - DO NOT WEAR JEANS.*

#### *SPECIAL HALF TERM TRAINING WEEKEND TO GLENDALOUGH*

- DATE:** Friday 17th February 1995  
**MEET:** Custom House Steps, Dublin for special bus to Glendalough  
**TIME:** 6.00pm. on Friday and arriving back in Dublin before 6.00pm on Sunday 19th.  
**COST:** Under 18 years - £10

Over 18 years - £16

Cost includes bus fare and two overnights.

**BRING:** An Oige hostelling card, sleeping bag, two breakfasts, two lunches and food enough for one dinner, clothes for hiking, boots, complete change of clothes, rainwear.

There will be two grades of hikes on this weekend - one for beginners and one for those with some map and compass experience.

The committee of the Hillwalkers Club has very generously subsidised the bus for those under 18 years.

*You don't have to be a teenager to hike with the Saturday Club - why not make up a party?  
Remember, two adults and up to four children can travel all day on a family ticket for £6.*

### LEADERS URGENTLY WANTED

**CONTACT MARTIN FAGAN AT 8743082 (H) AFTER 7PM.**

## ANNUAL MEMBERSHIP

MEMBERSHIP is now due for 1995. The cost of annual membership to the An Oige Hillwalkers Club is £7.00. Please note that we may have to limit our membership this year as there is great demand to join the club. So hurry and renew your membership! This will be the *LAST* programme for anyone who has not yet renewed their membership. Don't forget to renew your membership to An Oige as well..

### BACK CHAT - the Hillwalkers social column

Any news or views, articles for sale - get well wishes - holiday ideas - give Dave Rooney a buzz on 834 4811 (h) after 7.00pm.

## WEEKENDS AWAY

### *St. PATRICK'S WEEKEND IN THE GALTEE MOUNTAINS*

- COST:** £35.00. This includes overnights, transport to/from Dublin, transport to/from hikes each day.
- HOSTEL:** Ballydavid Wood YH.
- BOOKING:** An Oige Head Office, Mountjoy Street, tel. 830 4555. Credit card bookings accepted.
- DEPOSIT:** £20.00
- MEALS:** Warden will provide meals on Friday and Saturday night @ £10.00 for two meals. Please indicate when booking if you wish to avail of this option. Payment for meals to be made directly to leaders on weekend itself.
- DEPARTURE:** CUSTOM HOUSE. Thursday March 16th at 6.00pm.
- LEADERS:** Jim Barry and Dave Rooney.

---

### *CAMPING WEEKEND IN THE COMERAGHS*

- DATE:** 18 - 19 February 1995
- DEPOSIT:** £10 deposit to be sent to Maggie Greaney, 14 York Road, Rathmines, Dublin 6 and give details of home address and tel. nos.

## WICKLOW WAY BACKPACK

- DATE:** Friday 28 April - Monday 1 May 1995.
- HOSTELS:** Knockree, Glendalough and Aughavanagh Youth Hostels.
- COST:** £14.50 for three overnights and special bus on Monday evening. (Approx £6.00 per person). Booking is now open in An Oige Head Office. Access or Visa accepted. Tel. 830 4555.
- MEET:** Craft shop Marley Park at 6.00pm. on Friday 28th April for hike to Knockree YH. We will arrive back in Dublin at 7.00pm. approx. on Monday 1st May.

This was a very enjoyable hostel to hostel backpack last and is being repeated this year in response to numerous requests.

---

## WALKING WEEKEND IN WALES

*This is a joint trip with the Newcomers Committee*

- DATE:** Friday 2nd June - Monday 5th June 1995 (arriving back in Dun Loaghaire at approx. 6.00pm on Tuesday 6th)
- HOSTEL:** Snowdon Ranger Youth Hostel, Wales.
- COST:** Approx. £120, with a deposit of £60.
- ROUTES:** *Saturday:* Welsh 3,000 challenge - hike from the sea to the top of Snowdon - all the 3,000ft mountains on the way (17 miles to the top of Snowdon and 5 easy miles down)  
*Sunday:* A short day on the Mole Hebog Ridge  
*Monday:* Classic Circuit of Cader Idris.

### MODERATE HIKES WILL BE ORGANISED EACH DAY

As we have had to turn people away for the last two years, please book at head office as soon as possible to secure a place.

Everything is included in cost - all transport, meals, sheet bag hire. Only pocket money required. Vegetarians are very well catered for at this hostel.

## HOLIDAYS AWAY

*Scottish Walking Holiday*

- Details:** 10 Days walking holiday, *20 places only.*
- Dates:** Saturday August 5th to Monday August 14th
- Booking:** Martin Fagan at 874 3082 (home after 7.00pm. on Wednesday or Thursday nights)
- Routes:** Crianlarich, Glencoe, Glennevis, Abiemore.
- Leader:** Martin Fagan.

## NOW AVAILABLE...

*THE MOUNTAIN RESCUE ASSOCIATION HANDBOOK* is now available. The price in the shops is £3.90 but you can buy it from any member of the committee for a mere £2.00. It contains valuable information and telephone numbers on each of the Mountain Rescue teams in the country, as well as first aid and mountain evacuation procedures.



## BASIC FIRST AID COURSE

- Venue:** The St. John Ambulance Brigade of Ireland  
Head office,  
29 Upper Leeson St.,  
Dublin 4. Tel: 66 88 077
- DURATION:** 8 weeks - seven lectures and exam on the eighth night.
- COST** £40 - plus £9 for first aid manual (£49 in total)  
Cheques and postal orders should be made payable to St. John Ambulance Brigade and sent directly to the above address and not to An Oige, before the course commences.
- DATE:** Course commences on 11th April, 1995 and runs for 8 weeks.  
The course is run on a Tuesday night from 8.00pm to 10.00p.m.  
There will be a lecture for the first hour and a practical for the last hour based on the lecture. Please arrive early on the evening of the first lecture for enrolment.
- NOTE:** Anyone who intends doing the Mountain Leadership Course needs to have a current basic first aid certificate.

## AN OIGE SOCIAL NEWS

**SWIMMING:** Every Tuesday evening in the ESB Sports-Co., South Lots Road, Ringsend  
Between 9.00pm. and 10.00pm. Price: £1.50

## MAP AND COMPASS PRACTICE WEEKEND

*This weekend is for people who have already completed a basic map and compass course. The idea is that the participants plan out a route, do a route card and each person on the weekend leads a particular section of the walk. Two experienced people will be on the weekend to assist.*

**DATE:** 3rd - 5th February 1995  
**ORGANISERS:** Joseph Kellegher 838 1973 (Home)  
Brian Madigan 838 6608 (Home)  
**AREA:** Comeragh Mountains  
**DEPOSIT:** £10 deposit. Contact the above leaders for details.  
**PLACES LIMITED TO 20 PEOPLE.**

## AN OIGE NOTES

*Ballinlea Youth Hostel is now reopened under new wardens, Mr. and Mrs Fenton. We would like to encourage our members to use this hostel whenever possible.*

## FUNDRAISING SOCIAL EVENING

on

Saturday 11th February 1995

8.00pm - 12.00pm.

in

DUBLIN INTERNATIONAL YOUTH HOSTEL

61 Mountjoy Street

Meal served at 8.30pm sharp

Tickets £10 - Buffet - Live Music

Tickets available from An Oige Head Office and also from

Martin Fagan at 8743082 (h)

## ***ANOTHER SOCIAL NIGHT***

*Kevin Parker and Jim Smith* are running another of their very successful social nights.

**FRIDAY 21ST APRIL 1995**

**IN**

**THE RINGSIDE CLUB**

**(Beside the National Stadium)**

**FROM 8.00pm. TO 12.30pm.**

**(Last admission 10.30pm.)**

**TICKETS £3 LIMITED TO 300**

**(Meals available on the evening at extra cost)**

**Tickets available from An Oige Head Office, tel. 830 4555**

**Kevin Parker tel: 453 4627 Jim Smith tel: 453 5854**

**The Hillwalkers Club wish Kevin and Jim every success with their social night.**

## ***MARCH PROGRAMME***

***MARCH PROGRAMME:*** Articles or notices for inclusion in the March Hillwalker should be sent by the 15th February to Gerry Walsh, 14 Londonbridge Drive, Sandymount, Dublin 4.

*Anything received after this date will not be included.*

*Just a note: I wish to welcome Gerry Walsh on to the committee of the Hillwalkers Club and wish him every success as the new editor of the club programme. I would also like to thank all my fellow members of the committee for their help and last but not least all the members of the club who contributed articles over the past two years.*

*Maggie Greaney.*

# HILLWALKERS CLUB

## Hike Statistics 1994

	Jan	Feb	Mar	Apr	May	Jun	Jul	Aug	Sept	Oct	Nov	Dec
Number of Hikes	5	3	4	3	5	4	4	4	4	4	4	4
Lowest participation on hikes	14	23	24	20	16	10	17	13	12	11	16	12
Highest participation on hikes	28 <sup>IHH</sup>	35 <sup>IHH</sup>	30 <sup>IHH</sup>	42 <sup>IHH</sup>	Cooleys May 1 49	20	22	26 <sup>IHH</sup>	27 <sup>IHH</sup>	27 <sup>IHH</sup>	29 <sup>IHH</sup>	33 <sup>IHH</sup>
Total monthly participation on hikes	116	82	108	89	136	63	79	65	70	83	83	75
Average weekly participation on hikes	23	27	27	29	27	16	17	16	17	21	21	19
-----												
Weekends Away		Galties Feb 20 40 people		Connemara Apr 3 50 people		Wicklow Backpack 10 people		Mournes Aug 1 40 people		Killarney Oct 30 60 people		
Holidays					Wales May 5 40 people	Lake Dis Jun 6 20 people						Lake Dis Dec 29 18 people

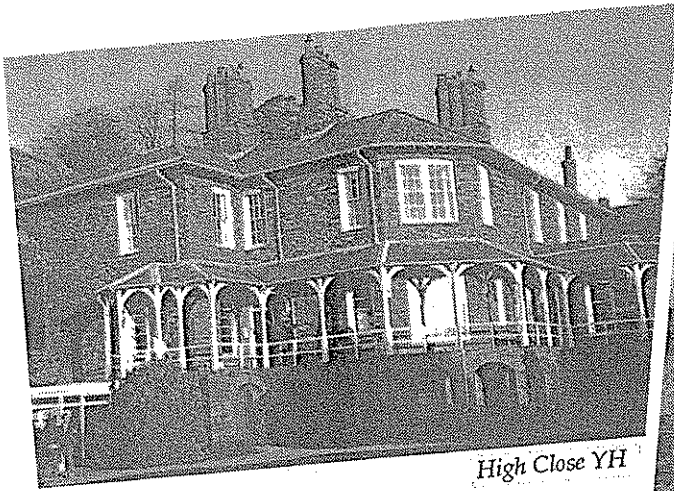
### NOTES

1. Any hike with the superscript "IHH" denotes an Introductory Hard Hike

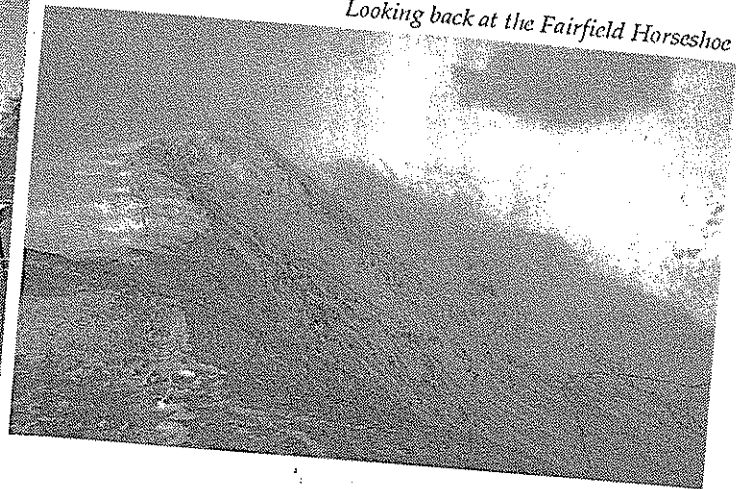


# Walking in the Lake District

29 December 1994 - 2 January 1995



High Close YH



Looking back at the Fairfield Horseshoe

On Thursday morning our group of 18 hillwalkers set out from Dublin via Larne-Stranraer to the Lake District. As no-one thought of eloping to Gretna Green on the way, we all arrived safely in Grasmere at approx. 9 pm. High Close YH is set in the hills above Grasmere and Elterwater: 100 beds, a friendly warden, good facilities, lovely food (*choice of cooked breakfasts, packed lunch, three-course dinner with vegetarian option*) and an excellent drying room!

**Friday:** Our walk, which started from Dob Gill waterfall above Thirlmere Lake, turned out quite wet both from above (*rain & sleet*) and underfoot. From Watendlath Tarn where we had lunch in the company of a gaggle of hungry geese we walked back across the hills to Thirlmere with the last few miles winding along the lake shore.

**Saturday:** The Fairfield Horseshoe offers a 10 mile round trip from Ambleside with the track following the ridge at between 2100 and 2550 feet. Despite clear skies, we were soon walking in blizzard-like conditions with high winds whipping up the powdery snow. The icy wind turned lunch into a hurried affair; we got very cold and miserable, despite flasks of hot tea (*thanks Deirdre!*). But as soon as we passed Rydal Head, the peak of the horseshoe, we had the wind at our backs and could enjoy the views: snowy fields accentuating the rocky mountain side, criss-crossed by stone walls, icy surfaces glistening in the sun and turning pink towards evening. - Back at the hostel, a group of hillwalkers from Yorkshire

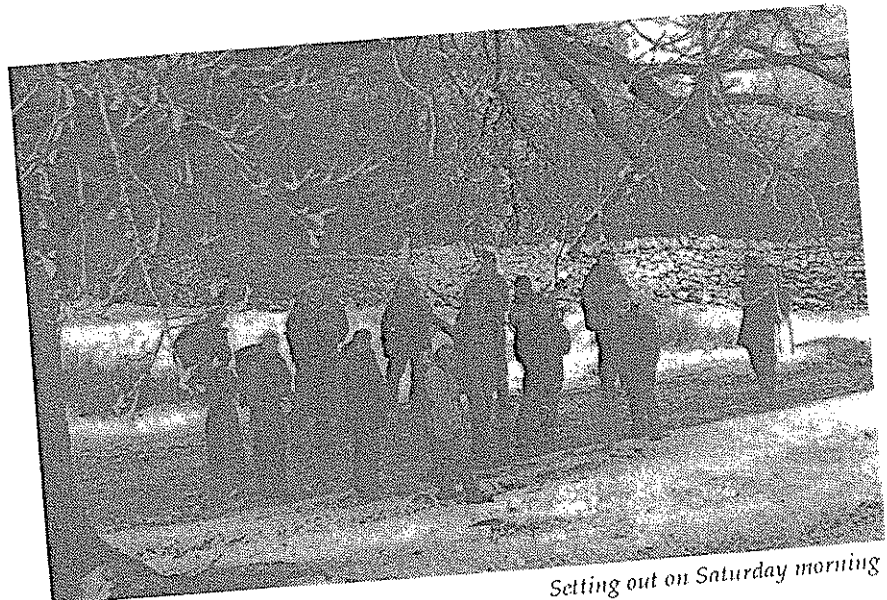
invited us to take part in their parlour games, so the last hours of the old year were spent with variations on "musical chairs" and a game in which rows of "pupils" had to reply to "teacher": "*Please, sir, not me, sir, I think it's row number ...?, sir!*" - this became a kind of catch phrase for the rest of the trip!

By Sunday morning the temperature had dropped even lower, so that most of the group opted out of attempting Scafell Pike, at 3253 feet the highest mountain in England. The four brave men who actually set out on the hike were forced to turn back at approx. 1200 feet, as the icy conditions made it too treacherous to continue. For the others, who had spent the day on an easy low level hike around Grasmere and Ambleside, the walk back to the hostel ended in

a "night hike" in the attempt to find a safe way around the frozen streams and icy slopes. We certainly enjoyed our dinner that evening!

**Monday:** Leaving High Close YH on a clear and frosty morning, some of us went sightseeing in Keswick, walking on Hadrian's Wall or rambling around Carlisle before meeting for a final meal in Stranraer. Unfortunately, our ferry was delayed, which added several hours to the journey, arriving in Dublin in the early hours of Tuesday morning. Many thanks to the drivers who got us back safely despite this extra pressure; thanks to the organisers, the leaders and to everybody in the group for making this a very enjoyable trip!

Barbara Sudrow



Setting out on Saturday morning